



Reducing Carbon Footprint

IBS



Energy Storage System



Energy Storage System Features:

1.Safety First



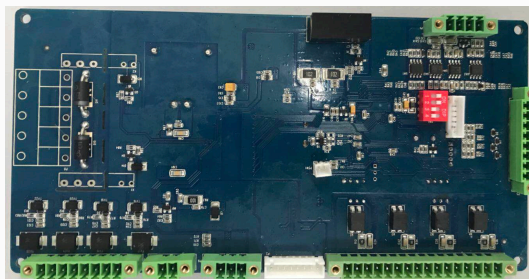
2.Smart Maintenance



3.High Efficiency



4.Units Modularized



High-Volt Energy Storage System



Competitive Advantage:

Safety First

- Online DC insulation monitoring, four level circuit break, five level linkage protection design on DC side
- Multiple safety strategies to proactively prevent safety incidents
- Early warning of failures,
- AI powered fire system design, multi-site monitoring and early warning, and fire extinguishing features

Reliable Operations

- Automatic security exit from single cluster subsystem failure to resolve the circulation of the battery cluster



High-Volt Energy Storage System

Competitive Advantage:

Cost effectiveness

- Precision temperature control at the battery cell level, intelligent charge and discharge management, and extended battery cycle life
- 95.5% cell cycling efficiency, 86% DC side efficiency to improve system cycling efficiency

AI Maintenance

- AI identifies malfunctioning and the weakest cells and improves the cell clusters using active balancing repair technology
- Substantially reduce the cost of operations, improve the efficiency of operation and power storage of energy storage systems



Energy Storage System (1000V)



2558KWH-1000
3198KWH-1000



Category	2558KWH-1000	3198KWH-1000
Battery Parameters		
Cell type	Square aluminum shell LFP 280ah	Square aluminum shell LFP 280ah
Rated capacity /kWh	2558KWh	3198KWh
Battery string configuration	1P238S (17units of 14-string modules)	1P238S (17units of 14-string modules)
System configuration	12*1P238S	15*1P238S
Rated voltage /V	716.8	761.6
Voltage range /V	666.4~856.8	666.4~856.8
Nominal charge / discharge rate	0.5C	0.5C
BMS communication interface	RS485 , Ethernet	RS485 , Ethernet
BMS protocol	Modbus RTU , Modbus TCP	Modbus RTU , Modbus TCP
System Parameter		
Dimensions (W * D * H) / mm	12192×2896×2438mm	12192×2896×2438mm
Weight /T	~ 40	~ 47
Operating temperature range	-20°C ~ +45°C 【1】	-20°C ~ +45°C 【1】
Relative humidity	5%~75%	5%~75%
Levels of protection	IP54	IP54
Maximum work altitude	< 3000m 【2】	< 3000m 【2】
Battery temperature control mode	Industrial-grade temperature-controlled air conditioning	Industrial-grade temperature-controlled air conditioning
Fire extinguisher system	HFC-227ea Fire-Fighting System	HFC-227ea Fire-Fighting System
Noise	≤78dBA	≤78dBA
Auxiliary power supply interface	AC380V / 50Hz, 3-phase 4 lines	AC380V / 50Hz, 3-phase 4 lines
Local monitoring system	BQ-JKXT-PC01	BQ-JKXT-PC01
System communication interface	RS485, Ethernet	RS485, Ethernet
System communication protocol	Standard: Modbus RTU, Modbus TCP	Standard: Modbus RTU, Modbus TCP

notes:

【1】 The system will be reduced when the ambient temperature exceeds 40 °C.

【2】 The system will decline when the elevation is between 2000 and 3000 m.



Energy Storage System (1000V)

BQ564KWH-250PCS
BQ1066KWH-500PCS



Category	BQ564KWH-250PCS	BQ1066KWH-500PCS
Battery Parameters		
Cell type	Square Aluminum Shell LFP 280ah	Square Aluminum Shell LFP280ah
Rated capacity /kWh	564KWh	1066KWh
Battery string configuration	1P210S (15 Units of 14Strings)	1P238S (17 Units)
System configuration	3*1P210S	5*1P238S
Rated voltage /V	672	761.6
Voltage range /V	588~756	666.4~856.8
Nominal charge / discharge rate	0.5C	0.5C
BMS communication interface	RS485 , Ethernet	RS485 , Ethernet
BMS protocol	Modbus RTU , Modbus TCP	Modbus RTU , Modbus TCP
AC Parameters		
AC side rated power	275 kVA	555 kVA
AC active power	250 KW	500 KW
AC constant voltage	400 V (310 -450 V)	400 V (310 -450 V)
grid frequency	50 Hz (45-55 Hz)	50 Hz (45-55 Hz)
On and off grid switching	Automatic (optional)	Automatic (optional)
System Parameters		
Dimensions (W * D * H) / mm	6096×2896×2438mm	6096×2896×2438mm
Weight /T	~ 10	~ 14
Operating temperature range	-20°C ~ +45°C 【1】	-20°C ~ +45°C 【1】
Relative humidity	5%~75%	5%~75%
Levels of protection	IP54	IP54
Maximum work altitude	< 3000m 【2】	< 3000m 【2】
Battery temperature control mode	Industrial-grade temperature-controlled AC	Industrial-grade temperature-controlled AC
Fire extinguisher system	HFC-227ea Fire-Fighting System	HFC-227ea Fire-Fighting System
Noise	AC380V/50Hz, 3-phase 4 lines	AC380V/50Hz, 3-phase 4 lines
Auxiliary power supply interface	BQ-JKXT-PC02	BQ-JKXT-PC02
Local monitoring system	RS485, Ethernet	RS485, Ethernet
System communication interface	Standard : Modbus RTU , Modbus TCP	Standard : Modbus RTU , Modbus TCP

notes:

- 【1】 The system will be reduced when the ambient temperature exceeds 40 °C.
- 【2】 The system will decline when the elevation is between 2000 and 3000 m.



Energy Storage System (1000V)

Category	BQ3211KWH-1000PCS	BQ5116KWH-2500PCS
Battery Parameters		
Cell type	Square aluminum shell LFP 280ah	Square aluminum shell LFP 280ah
Rated capacity/kWh	3198KWh	2558KWh*2
Battery string configuration	1P238S (16-strings)	1P238S (17-strings)
System configuration	16*1P224S	2*1P238S
Rated voltage /V	716.8	761.6
Voltage range /V	627.2~806.4	666.4~856.8
Nominal charge / discharge rate	RS485 , Ethernet	RS485 , Ethernet
BMS communication interface	Modbus RTU , Modbus TCP	Modbus RTU , Modbus TCP
AC Parameters		
AC output power	1100kVA	2750kVA
Maximum AC current	1000kVA	2500kVA
Voltage range	6~35kV	6~35kV
Grid frequency	50 Hz (45-55 Hz)	50 Hz (45-55 Hz)
Isolation method	Transformer Isolation	Transformer Isolation
Transformer Parameters		
Rated power	1000kVA	2500kVA
Maximum power	1100kVA	2750kVA
Voltage ratio	0.4kV / 6~35kV	0.4kV / 6~35kV
Group	Dy11	Dy11
System Parameters		
Storage Dimensions (W * D * H) / mm	12192×2896×2438mm	2* (12192×2896×2438mm)
PCS Dimensions W*D*H)/mm	6058*2896*2438mm	6058*2896*2438mm
Weight /T	~ 45T(Battery Pack)、 13.5T (PCS)	~ 40T(Battery Pack)、 16.5T (PCS)
Operating temperature range	-20°C ~ +45°C 【1】	-20°C ~ +45°C 【1】
Relative humidity	5%~75%	5%~75%
Levels of protection	IP54	IP54
Maximum work altitude	< 3000m 【2】	< 3000m 【2】
Battery temperature control mode	industrial-grade temperature-controlled air conditioning	industrial-grade temperature-controlled air conditioning
Fire extinguisher system	HFC-227ea Fire Fighting System	HFC-227ea Fire Fighting System
Auxiliary power supply interface	AC380V/50Hz, 3 phases 4 lines	AC380V/50Hz, 3 phases 4 lines
Local monitoring system	BQ-JKXT-PC02	BQ-JKXT-PC02
System communication interface	RS485, Ethernet	RS485, Ethernet
System communication protocol	Standard : Modbus RTU , Modbus TCP	Standard : Modbus RTU , Modbus TCP

BQ5116KWH-2500PCS BQ3211KWH-1000PCS



notes:

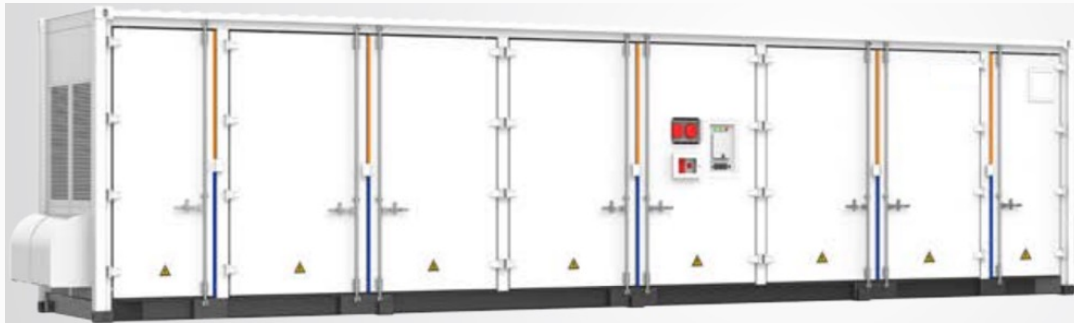
【1】 The system will be reduced when the ambient temperature exceeds 40 °C.

【2】 The system will decline when the elevation is between 2000 and 3000 m.



Energy Storage System (1500V)

3727KWH-1500



Category	3727KWH-1500
Battery Parameters	
Cell type	Square aluminum shell LFP 280ah
Rated capacity /kWh	3727KWh
Battery string configuration	1P416S (26 units of 1-string modules)
System configuration	10*1P416S
Rated voltage /V	1331.2
Voltage range /V	1164.8~1497.6
Nominal charge / discharge rate	0.5C
BMS communication interface	RS485 , Ethernet
BMS protocol	Modbus RTU , Modbus TCP
System Parameter	
Dimensions (W * D * H) / mm	12192×2896×2438mm
Weight /T	~ 45
Operating temperature range	-20°C ~ +45°C 【1】
Relative humidity	5%~75%
Levels of protection	IP54
Maximum work altitude	< 3000m 【2】
Battery temperature control mode	Industrial-grade temperature-controlled air conditioning
Fire extinguisher system	HFC-227ea Fire-Fighting System
Noise	≤78dBA
Auxiliary power supply interface	AC380V / 50Hz, 3-phase 4 lines
Local monitoring system	BQ-JKXT-PC01
System communication interface	RS485, Ethernet
System communication protocol	Standard : Modbus RTU , Modbus TCP

notes:

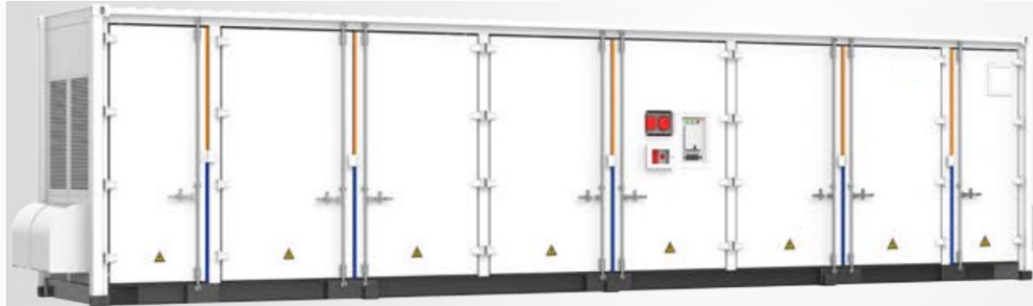
【1】 The system will be reduced when the ambient temperature exceeds 40 °C.

【2】 The system will decline when the elevation is between 2000 and 3000 m.



Energy Storage System (1500V)

BQ5000KWH-1500Fan



Category	BQ5000KWH-1500Fan
Battery Parameters	
Cell type	Square Aluminum Shell LFP 280ah
Rated capacity /kWh	5026KWh
Battery string configuration	1P374S (17 units of 22string modules)
System configuration	15*1P374S
Rated voltage /V	1196.8
Voltage range /V	1047.2~1346.4
Nominal charge / discharge rate	0.5C
BMS communication interface	RS485, Ethernet
BMS protocol	Modbus RTU, Modbus TCP
System Parameters	
Dimensions (W * D * H) / mm	13716×2896×2438mm
Weight /T	~49
Operating temperature range	-20°C~+45°C 【1】
Relative humidity	5%~75%
Levels of protection	IP54
Maximum work altitude	<3000m 【2】
Battery temperature control mode	Industrial-graded temperature controlled AC
Fire extinguisher system	HFC-227ea Fire-Fighting System
Noise	≤78dBA
Auxiliary power supply interface	AC380V/50Hz, 3 phases 4 lines
Local monitoring system	BQ-JKXT-PC01
System communication interface	RS485, Ethernet
System communication protocol	Standard: Modbus RTU, Modbus TCP

notes:

- 【1】 The system will be reduced when the ambient temperature exceeds 40 °C.
- 【2】 The system will decline when the elevation is between 2000 and 3000 m.



Energy Storage System (1500V)

Category	BQ5000KWH-2500PCS-1500V
Battery Parameters	
Cell type	Square aluminum shell LFP 280ah
Rated capacity/kWh	5026KWh
Battery string configuration	1P374S (17-strings)
System configuration	15*1P374S
Rated voltage /V	1196.8
Voltage range /V	1047.2~1346.4
Nominal charge / discharge rate	RS485 , Ethernet
BMS communication interface	Modbus RTU , Modbus TCP
AC Parameters	
AC output power	2500kVA
Maximum AC current	3174A
Voltage range	10~35kV
Grid frequency	50 Hz (45-55 Hz)
Isolation method	Transformer Isolation
Transformer Parameters	
Rated power	2500kVA
Maximum power	2750kVA
Voltage ratio	0.69kV / 10~35kV
Group	Dy11
System Parameters	
Storage Dimensions (W * D * H) / mm	13716×2896×2438mm
PCS Dimensions W*D*H)/mm	6058*2896*2438mm
Weight /T	~ 45T(Battery Pack)、 14T (PCS)
Operating temperature range	-20°C ~ +45°C 【1】
Relative humidity	5%~75%
Levels of protection	IP54
Maximum work altitude	< 3000m 【2】
Battery temperature control mode	industrial-grade temperature-controlled air conditioning
Fire extinguisher system	HFC-227ea Fire Fighting System
Auxiliary power supply interface	AC380V/50Hz, 3 phases 4 lines
Local monitoring system	BQ-JKXT-PC02
System communication interface	RS485, Ethernet
System communication protocol	Standard : Modbus RTU , Modbus TCP

BQ5000KWH-2500PCS-1500V



notes:

- 【1】 The system will be reduced when the ambient temperature exceeds 40 °C.
- 【2】 The system will decline when the elevation is between 2000 and 3000 m.

